



Electrolux
PROFESSIONAL

**Modular Cooking Range Line
thermaline 80 - 500 mm Electric
Warming Cabinet with 1 door, GN
conform, 1 Side (H2) - H=450**

ITEM # _____

MODEL # _____

NAME # _____

SIS # _____

AIA # _____



588305 (MA4GCAEOAO)

Electric warming cabinet,
with 1 door, one-side
operated, GN - H2

Short Form Specification

Item No. _____

500 mm wide warming cabinet with 1 door, constructed according to DIN 18860_2 with 70 mm recessed plinth. Internal frame for heavy duty sturdiness in 2 mm and 3 mm in 1.4301 (AISI 304). 2 mm top in 1.4301 (AISI 304). Flat surface construction, easily cleanable. THERMODUL connection system enables seamless worktop when units are connected and avoids soil penetrating. Temperature in the cabinet can be set through thermostat, up to a maximum of 110 °C. Cabinet storage space accepts GN 1/1 containers.

IPX5 water resistant certification.

Configuration: One-side operated freestanding base, hygienic class H2.

Main Features

- All major components may be easily accessed from the front.
- THERMODUL connection system creates a seamless work top when units are connected to each other thus avoiding soil penetrating vital components and facilitating the removal of units in case of replacement or service.
- Unit constructed according to DIN 18860_2 with 70 mm recessed plinth.
- Temperature in the cupboard can be set through a thermostat to suit different requirements. The maximum temperature is 110° C.
- Unit can be installed below modular top appliances, designed to keep plates warm.

Construction

- IPX5 water resistance certification.
- 2 mm top in 1.4301 (AISI 304).
- Flat surface construction with minimal hidden areas to easily clean all surfaces
- Storage space in the base of the appliance accepts GN1/1 containers.
- Internal frame for heavy duty sturdiness in stainless steel.

Optional Accessories

- Stainless steel side panel, 800x700mm, freestanding PNC 912509 ☐
- Stainless steel front kicking strip, 500mm width PNC 912631 ☐
- Stainless steel side kicking strip left and right, freestanding, 800mm width PNC 912655 ☐
- Stainless steel side kicking strip left and right, wall mounted, 800mm width PNC 912658 ☐
- Stainless steel side kicking strip left and right, back-to-back, 1600mm width PNC 912661 ☐
- Stainless steel plinth, against wall, 500mm width PNC 912841 ☐
- Stainless steel plinth, freestanding, 500mm width PNC 912860 ☐
- Stainless steel panel, 800x700mm, against wall, left side PNC 913093 ☐
- Stainless steel panel, 800x700mm, flush-fitting, against wall, right side PNC 913097 ☐
- Back panel, 500x450mm, for bases and units, one-side operated PNC 913164 ☐
- - NOT TRANSLATED - PNC 913214 ☐
- - NOT TRANSLATED - PNC 913215 ☐
- - NOT TRANSLATED - PNC 913233 ☐

APPROVAL: _____



Experience the Excellence
www.electroluxprofessional.com
ELUX_EMAIL



Electrolux
PROFESSIONAL

Modular Cooking Range Line
thermaline 80 - 500 mm Electric Warming
Cabinet with 1 door, GN conform, 1 Side (H2) -
H=450

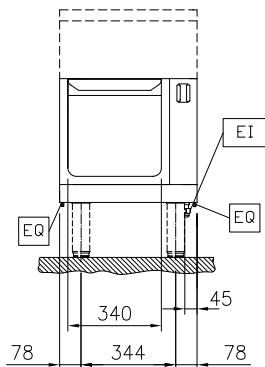
• - NOT TRANSLATED -	PNC 913244	<input type="checkbox"/>
• - NOT TRANSLATED -	PNC 913258	<input type="checkbox"/>
• - NOT TRANSLATED -	PNC 913263	<input type="checkbox"/>
• - NOT TRANSLATED -	PNC 913265	<input type="checkbox"/>
• - NOT TRANSLATED -	PNC 913271	<input type="checkbox"/>
• - NOT TRANSLATED -	PNC 913272	<input type="checkbox"/>
• - NOT TRANSLATED -	PNC 913279	<input type="checkbox"/>
• - NOT TRANSLATED -	PNC 913668	<input type="checkbox"/>
• - NOT TRANSLATED -	PNC 913684	<input type="checkbox"/>



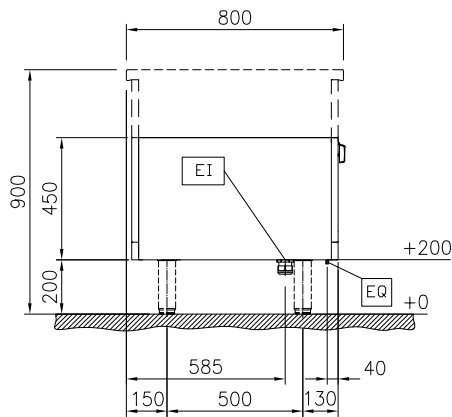
Modular Cooking Range Line
thermaline 80 - 500 mm Electric Warming Cabinet with 1 door, GN
conform, 1 Side (H2) - H=450
The company reserves the right to make modifications to the products
without prior notice. All information correct at time of printing.

2025.12.19

Front

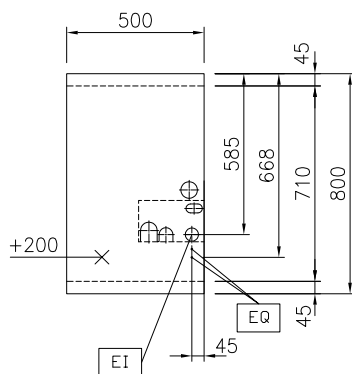


Side



EI = Electrical inlet (power)

Top



Key Information:

External dimensions, Width:	
588305 (MA4GCAEOAO)	500 mm
External dimensions, Depth:	800 mm
External dimensions, Height:	450 mm
Cupboard Cavity Dimensions (width):	340 mm
Cupboard Cavity Dimensions (height):	330 mm
Cupboard Cavity Dimensions (depth):	715 mm
Cabinet temperature range:	30-110 °C
Net weight:	21 kg

Sustainability

Current consumption:	2.5 Amps
----------------------	----------